



Premium replacement parts to suit Metso® Nordberg® C Series Jaw Crushers



Premium Crusher Wear Parts

Swing Jaw Plates, Fixed Jaw Plates, Upper & Lower Cheek Plates, Toggle plates, Toggle Seats & Protection Plates.

Premium grade crusher liners are supplied from our vast stock inventory in our special M14, M18 & M21 material grades.

Classic Lokomo™ & Bergeaud machines supported.



C80 | C95 | C96 | C100 | C105 | C106 | C116 | C3054 | C110 | C120 | C125 | C130 | C140 | C145 | C150 | C160 | C200

Metso®, Nordberg® & Lokomo™ are registered trademarks of Metso® Corporation | CMS Ccepcor® has no affiliation with Metso® Corporation

#ResultsWithoutCompromise



Global Service

& Support

CMS Cepcor Ltd
1 Vulcan Way, Coalville
Leicestershire, LE67 3AP
United Kingdom

☎ **+44 (0) 1530 817 000**

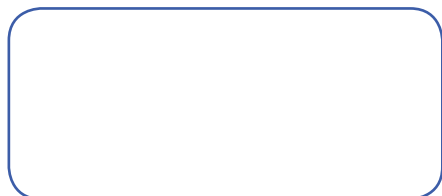
✉ **sales@cmscepcor.com**

🌐 **www.cmscepcor.com**



- ☒ **The genuine alternative**
- ☒ **Leading multi-brand service provider**
- ☒ **Lloyds Register ISO9001:2015**
- ☒ **State-of-the-art UK manufacturing facilities**
- ☒ **\$20 million USD Stock inventory**
- ☒ **Re-manufactured Metso® Nordberg® crushers**

Authorised Distributor



[f /cms cepcor](#) [t /cms_cepcor](#) [in /cms cepcor ltd](#)

Metso®, Nordberg® & Lokomo™ are registered trademarks of Metso® Corporation | CMS Cepcor® has no affiliation with Metso® Corporation

Premium replacement parts to suit **Primary Gyratory Crushers**



Premium grade wear parts

Concave Segments, Mantles, Spider Caps, Spider Arm Guards, Rim Liners, Bottom Shell Wearing Plates.

Korrobond[®] Crusher Backing Compound.

Premium grade crusher liners are supplied from our vast stock inventory in our special M14, M18 & M21 material grades.

Concave Segments also available in our B9 alloy. Ask about our bespoke optimised chamber liners.



Global Service

& Support

CMS Cepercor Ltd
1 Vulcan Way, Coalville
Leicestershire, LE67 3AP
United Kingdom

+44 (0) 1530 817 000

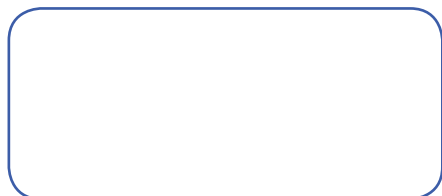
sales@cmscepcor.com

www.cmscepcor.com



- © The genuine alternative
- © Lloyds Register ISO9001:2015
- © \$20 million USD Stock inventory
- © Leading multi-brand service provider
- © State-of-the-art UK manufacturing facilities
- © Bespoke crusher liner solutions

Authorised Distributor



[/cms cepecor](#) [/cms_cepecor](#) [/cms cepecor ltd](#)

Premium replacement parts to suit
Sandvik® CH & CS Cone Crushers



Premium grade wear parts

Concaves, Concave Segments, Mantles,
Spider Caps, Spider Arm Guards, Rim Liners,
Bottom Shell Wearing Plates, Feed Hopper Cones
& Korrobond® Crusher Backing Compound.

Premium grade crusher liners are supplied from
our vast stock inventory in our special M14,
M18 & M21 material grades.

Classic 1000 & 1800 Series Hydrocone®
& Superior® fully supported.



CH420 | CH430 | CH440 | CH660 | CH870 | CH880 | CH890 | CH895 | CS420 | CS430 | CS440 | CS660

Sandvik® CH & CS are registered trademarks of Sandvik® Mining & Construction | CMS Ccepcor® has no affiliation with Sandvik® Mining & Construction

#ResultsWithoutCompromise



Global Service

& Support

CMS Cepcor Ltd
1 Vulcan Way, Coalville
Leicestershire, LE67 3AP
United Kingdom

☎ **+44 (0) 1530 817 000**

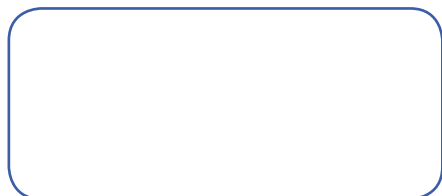
✉ **sales@cmscepcor.com**

🌐 **www.cmscepcor.com**



- © **The genuine alternative**
- © **Lloyds Register ISO9001:2015**
- © **\$20 million USD Stock inventory**
- © **Leading multi-brand service provider**
- © **State-of-the-art UK manufacturing facilities**
- © **Re-manufactured Sandvik® crushers**

Authorised Distributor



[f /cms cepcor](#) [t /cms_cepco](#) [in /cms cepcor ltd](#)

Sandvik®, Hydrocone® & Superior® are registered trademarks of Sandvik® Mining & Construction | CMS Cepcor® has no affiliation with Sandvik® Mining & Construction



Premium replacement parts to suit Metso[®] Nordberg[®] HP Cone Crushers



Premium grade wear parts

Mantles, Bowl Liners, Arm Guards, Feed Cones, Torch Rings, Main Frame Liners, Conical Hoppers & Korrobond[®] Crusher Backing Compound.

Premium grade crusher liners are supplied from our vast stock inventory in our special M14, M18 & M21 material grades.

Classic Symons, Lokomo & Bergeaud machines fully supported.



HP100 | HP200 | HP300 | HP400 | HP500 | HP700 | HP800 | HP3 | HP4 | HP5 | HP6

Metso[®] and HP[™] are registered trademarks of Metso[®] Corporation | CMS Ccepcor[®] has no affiliation with Metso[®] Corporation

#ResultsWithoutCompromise



Global Service

& Support

CMS Cepcor Ltd
1 Vulcan Way, Coalville
Leicestershire, LE67 3AP
United Kingdom

☎ **+44 (0) 1530 817 000**

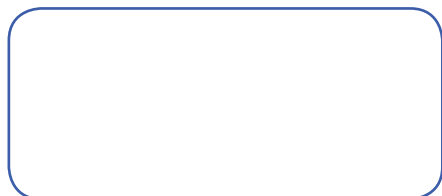
✉ **sales@cmscepcor.com**

🌐 **www.cmscepcor.com**



- Ⓒ **The genuine alternative**
- Ⓒ **Lloyds Register ISO9001:2015**
- Ⓒ **\$20 million USD Stock inventory**
- Ⓒ **Leading multi-brand service provider**
- Ⓒ **State-of-the-art UK manufacturing facilities**
- Ⓒ **Re-manufactured Metso® Nordberg crushers**

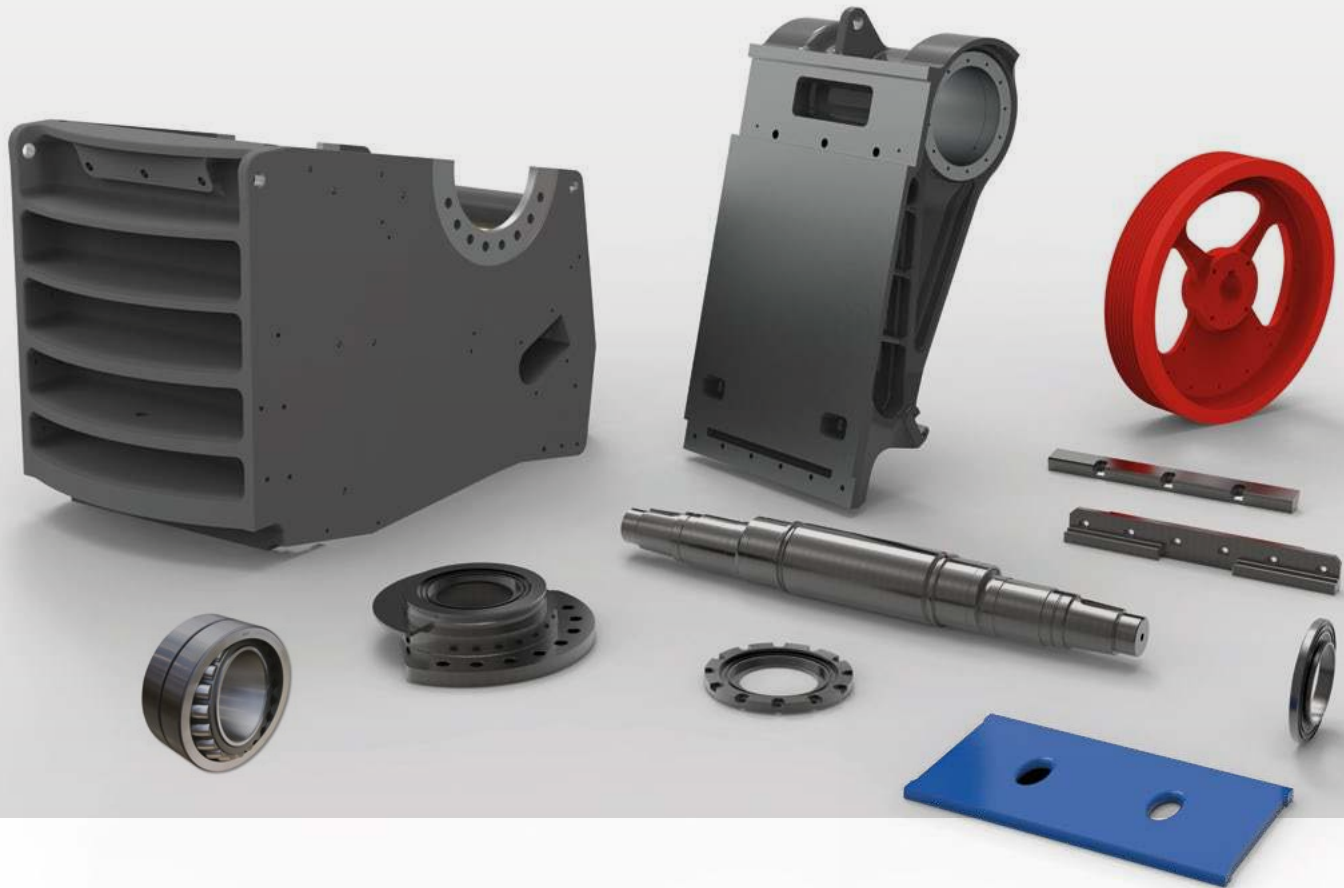
Authorised Distributor



[f /cms cepcor](#) [t /cms_cepcor](#) [in /cms cepcor ltd](#)

Metso® and HP™ are registered trademarks of Metso® Corporation | CMS Cepcor® has no affiliation with Metso® Corporation

Premium replacement parts to suit
Sandvik® Jaw Crushers



Premium Crusher Wear Parts

Swing Jaw Plates, Fixed Jaw Plates, Upper & Lower Side Liners, Toggles plates, Toggle Seats & Wear Plates.

Premium grade crusher liners are supplied from our vast stock inventory in our special M14, M18 & M21 material grades.

Classic Jawmaster™, Extec™ & Fintec™ machines fully supported.



CJ211 | CJ408 | CJ409 | CJ411 | CJ412 | CJ612 | CJ613 | CJ615 | CJ815 | QJ241 | QJ341

Sandvik®, Jawmaster™, Extec™ & Fintec™ are registered trademarks of Sandvik® Mining & Construction | CMS Ccepcor® has no affiliation with Sandvik® Mining & Construction.

#ResultsWithoutCompromise



Global Service

& Support

CMS Cepercor Ltd
1 Vulcan Way, Coalville
Leicestershire, LE67 3AP
United Kingdom

+44 (0) 1530 817 000

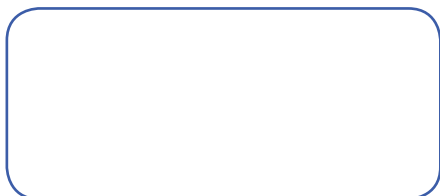
sales@cmscepcor.com

www.cmscepcor.com



- The genuine alternative
- Lloyds Register ISO9001:2015
- \$20 million USD Stock inventory
- Leading multi-brand service provider
- State-of-the-art UK manufacturing facilities
- Re-manufactured Sandvik® crushers

Authorised Distributor



[/cms cepecor](#) [/cms_cepecor](#) [/cms cepecor ltd](#)

Sandvik®, Jawmaster™, Extec™ & Fintec™ are registered trademarks of Sandvik® Mining & Construction | CMS Cepercor® has no affiliation with Sandvik® Mining & Construction.